

PROJECT : G70/1 (GIRODE-70/1)
DEVELOPER: EWISSEN INFRASTRUCTURE
GOVT. APPROVED PROJECT

Project Location: Village Girode, Dodamarg, Sindhudurg, Maharashtra.

Project Coordinates: 15°40'1.77"N, 73°59'32.85"E

The project falls in Maharashtra on the Goa-Maharashtra border.

- The project is located Just 30 kms (35 minutes) drive from Panjim via Chorao.
- 18~ kms from the upcoming under construction Mopa International Airport
- 19 kms from Thivim railway station
- 25 kms from Mapusa
- 10 kms from Bicholim industrial Area
- 2 kms from Dodamarg Town Market
- 20 Kms from Sanqueilm Town
- 35 Kms from Old goa Church
- 30 Km from Baga & Calangute Beach
- 35 Km from Anjuna & Vagator Beach
- 25 Kms From National Highway 66 (Mumbai Goa)
- 50 Mtr From State High way

Key Propositions features of the project:

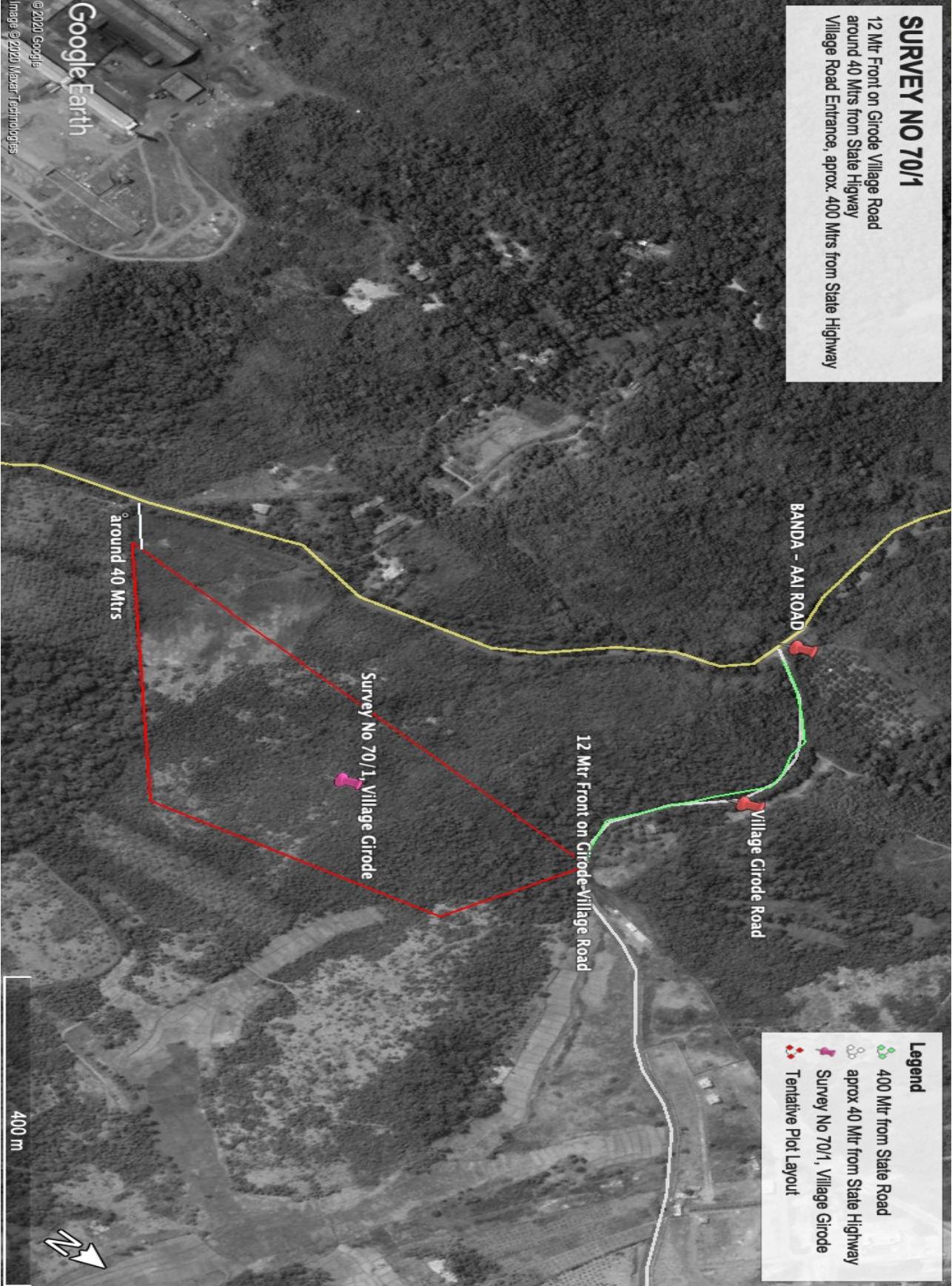
Govt. Approved Commercial + Residential Project.

- ◆ Adjacent to Municipal Boundary Kasai Dodamarg
- ◆ 40 Feet (12 Mtr) Main Entrance Road
- ◆ 30 Feet (9 Mtr) wide Internal Roads and Drains
- ◆ Fenced and gated Project
- ◆ Electric Connectivity, dedicated Transform electric systems.
- ◆ Drinking Water over head tank and distribution system
- ◆ Wellness Resort / Center
- ◆ Yoga and Meditation Area
- ◆ Entertainment & Health Zone
- ◆ Parking Areas
- ◆ Plantations and landscaping close to Nature.
- ◆ Open Space and Roads as per Govt. Norms.
- ◆ No Legal hassles

Project Area Statement		
Items	Plot Area Sq.Mtr	Plot Area Sq. Ft.
Total Project Site Area	91700.00	987041.00
Amenity Space	9162.00	98618.00
Open Space / Common Area	9164.00	98640.00
Internal Road Area	17137.00	184460.00
Extra Space for Electricity	90.00	969.00

Common/ Open/Amenity Space	Plot Area (sq.m.)	Plot Area (sq.Ft.)
Amenity Space	9162.00	98618.00
Open Space 1	583.00	6276.00
Open Space 2	1178.00	12680.00
Open Space 3	2805.00	30193.00
Open Space 4	2324.00	25016.00
Open Space 5	2274.00	24477.00





Plot no.	Plot area (sq.m.)	Pro-Rata FSI factor	Built-up area on Pro-Rata basic ie. (d X e) (sq.m.)	Plot no.	Plot area (sq.m.)	Pro-Rata FSI factor	Built-up area on Pro-Rata basic ie. (d X e) (sq.m.)
3	293.00	1.47	430.71	49	306.00	1.47	449.82
4	312.00	1.47	458.64	50	306.00	1.47	449.82
5	279.00	1.47	410.13	51	300.00	1.47	441.00
6	273.00	1.47	401.31	52	300.00	1.47	441.00
7	276.00	1.47	405.72	53	300.00	1.47	441.00
8	327.00	1.47	480.69	54	300.00	1.47	441.00
9	392.00	1.47	576.24	55	300.00	1.47	441.00
10	300.00	1.47	441.00	56	369.00	1.47	542.43
11	300.00	1.47	441.00	57	300.00	1.47	441.00
12	300.00	1.47	441.00	58	300.00	1.47	441.00
13	300.00	1.47	441.00	59	300.00	1.47	441.00
14	300.00	1.47	441.00	60	300.00	1.47	441.00
16	356.00	1.47	523.32	61	300.00	1.47	441.00
17	300.00	1.47	441.00	62	300.00	1.47	441.00
18	300.00	1.47	441.00	63	300.00	1.47	441.00
19	300.00	1.47	441.00	64	300.00	1.47	441.00
20	389.00	1.47	571.83	65	330.00	1.47	485.10
21	265.00	1.47	389.55	66	310.00	1.47	455.70
22	300.00	1.47	441.00	67	300.00	1.47	441.00
23	300.00	1.47	441.00	68	300.00	1.47	441.00
24	300.00	1.47	441.00	69	300.00	1.47	441.00
25	300.00	1.47	441.00	70	300.00	1.47	441.00
26	300.00	1.47	441.00	71	300.00	1.47	441.00
27	300.00	1.47	441.00	72	300.00	1.47	441.00
28	383.00	1.47	563.01	73	300.00	1.47	441.00
29	318.00	1.47	467.46	74	300.00	1.47	441.00
30	291.00	1.47	427.77	75	306.00	1.47	449.82
32	251.00	1.47	368.97	76	306.00	1.47	449.82
33	260.00	1.47	382.20	77	300.00	1.47	441.00
34	252.00	1.47	370.44	78	300.00	1.47	441.00
35	259.00	1.47	380.73	79	300.00	1.47	441.00
36	258.00	1.47	379.26	80	300.00	1.47	441.00
37	256.00	1.47	376.32	81	300.00	1.47	441.00
38	253.00	1.47	371.91	82	306.00	1.47	449.82
39	259.00	1.47	380.73	84	300.00	1.47	441.00
40	256.00	1.47	376.32	85	300.00	1.47	441.00
41	258.00	1.47	379.26	86	300.00	1.47	441.00
42	253.00	1.47	371.91	87	300.00	1.47	441.00
43	306.00	1.47	449.82	88	300.00	1.47	441.00
44	300.00	1.47	441.00	89	306.00	1.47	449.82
45	300.00	1.47	441.00	90	306.00	1.47	449.82
46	300.00	1.47	441.00	91	300.00	1.47	441.00
47	300.00	1.47	441.00	92	300.00	1.47	441.00
48	300.00	1.47	441.00	93	300.00	1.47	441.00

Plot no.	Plot area (sq.m.)	Pro-Rata FSI factor	Built-up area on Pro-Rata basic ie. (d X e) (sq.m.)	Plot no.	Plot area (sq.m.)	Pro-Rata FSI factor	Built-up area on Pro-Rata basic ie. (d X e) (sq.m.)
94	300.00	1.47	441.00	144	270.00	1.47	396.90
95	300.00	1.47	441.00	146	270.00	1.47	396.90
96	300.00	1.47	441.00	147	260.00	1.47	382.20
97	300.00	1.47	441.00	148	260.00	1.47	382.20
98	306.00	1.47	449.82	149	260.00	1.47	382.20
99	296.00	1.47	435.12	150	260.00	1.47	382.20
100	300.00	1.47	441.00	151	260.00	1.47	382.20
101	300.00	1.47	441.00	152	256.00	1.47	376.32
102	300.00	1.47	441.00	153	300.00	1.47	441.00
103	300.00	1.47	441.00	154	300.00	1.47	441.00
104	300.00	1.47	441.00	155	300.00	1.47	441.00
107	300.00	1.47	441.00	156	300.00	1.47	441.00
108	300.00	1.47	441.00	157	306.00	1.47	449.82
109	300.00	1.47	441.00	158	306.00	1.47	449.82
110	300.00	1.47	441.00	159	300.00	1.47	441.00
111	300.00	1.47	441.00	160	300.00	1.47	441.00
112	296.00	1.47	435.12	161	300.00	1.47	441.00
113	306.00	1.47	449.82	162	300.00	1.47	441.00
114	300.00	1.47	441.00	163	300.00	1.47	441.00
115	300.00	1.47	441.00	164	251.00	1.47	368.97
117	300.00	1.47	441.00	165	260.00	1.47	382.20
118	300.00	1.47	441.00	166	260.00	1.47	382.20
119	300.00	1.47	441.00	167	260.00	1.47	382.20
120	306.00	1.47	449.82	168	260.00	1.47	382.20
121	306.00	1.47	449.82	169	260.00	1.47	382.20
122	300.00	1.47	441.00	170	260.00	1.47	382.20
123	300.00	1.47	441.00	171	260.00	1.47	382.20
124	300.00	1.47	441.00	172	260.00	1.47	382.20
125	300.00	1.47	441.00	173	260.00	1.47	382.20
126	300.00	1.47	441.00	174	260.00	1.47	382.20
127	300.00	1.47	441.00	175	260.00	1.47	382.20
128	300.00	1.47	441.00	176	260.00	1.47	382.20
129	300.00	1.47	441.00	177	260.00	1.47	382.20
130	300.00	1.47	441.00	178	260.00	1.47	382.20
131	300.00	1.47	441.00	179	260.00	1.47	382.20
132	306.00	1.47	449.82	180	260.00	1.47	382.20
133	306.00	1.47	449.82	181	260.00	1.47	382.20
134	300.00	1.47	441.00	182	270.00	1.47	396.90
135	300.00	1.47	441.00	183	256.00	1.47	376.32
136	300.00	1.47	441.00	184	260.00	1.47	382.20
138	256.00	1.47	376.32	185	260.00	1.47	382.20
139	260.00	1.47	382.20	186	260.00	1.47	382.20
140	260.00	1.47	382.20	187	260.00	1.47	382.20
141	260.00	1.47	382.20	188	260.00	1.47	382.20
142	260.00	1.47	382.20	189	270.00	1.47	396.90
143	260.00	1.47	382.20				